

# JBED

*National Institute of Building Sciences: An Authoritative Source of Innovative Solutions for the Built Environment*

Winter 2013

## Journal of Building Enclosure Design

An official publication of the National Institute of Building Sciences  
Building Enclosure Technology and Environment Council (BETEC)



# Thermal Bridging: It Can Be Done Better

# JBED

**Published For:**  
**The National Institute of Building  
 Sciences Building Enclosure Technology and  
 Environment Council**  
 1090 Vermont Avenue, NW, Suite 700  
 Washington, DC 20005-4905  
 Phone: (202) 289-7800  
 Fax: (202) 289-1092  
 nibs@nibs.org  
 www.nibs.org

**PRESIDENT**  
 Henry L. Green, Hon. AIA

**CHIEF OPERATING OFFICER**  
 Earle W. Kennett

**PUBLISHED BY:**  
 Matrix Group Publishing Inc.  
 Please return all undeliverable addresses to:  
 5190 Neil Road, Suite 430  
 Reno, NV 89502  
 Phone: (866) 999-1299  
 Fax: (866) 244-2544

**PRESIDENT & CEO**  
 Jack Andress

**CHIEF OPERATING OFFICER**  
 Jessica Potter  
 jpotter@matrixgroupinc.net

**PUBLISHER**  
 Peter Schulz

**EDITOR-IN-CHIEF**  
 Shannon Savory  
 ssavory@matrixgroupinc.net

**EDITOR**  
 Alexandra Walld

**FINANCE/ACCOUNTING &  
 ADMINISTRATION**  
 Shoshana Weinberg, Pat Andress,  
 Nathan Redekop  
 accounting@matrixgroupinc.net

**DIRECTOR OF MARKETING &  
 CIRCULATION**  
 Shoshana Weinberg

**SALES MANAGER - WINNIPEG**  
 Neil Gottfred

**SALES MANAGER - HAMILTON**  
 Brian Davey

**MATRIX GROUP PUBLISHING INC.  
 ACCOUNT EXECUTIVES**  
 Rick Kuzie, Brian MacIntyre, Brodie Armes,  
 Christopher Smith, David Roddie, Declan  
 O'Donovan, Jeff Cash, Jim Hamilton, Ken  
 Percival, Monique Simons, Rick Kuzie, Robert  
 Allan, Robert Choi, Ronald Guerra, Wilma  
 Gray-Rose, John Price, Colleen Bell

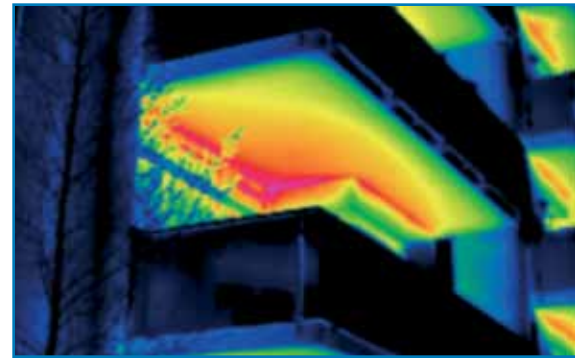
**ADVERTISING DESIGN**  
 James Robinson

**LAYOUT & DESIGN**  
 Travis Bevan

©2012-2013 Matrix Group Publishing Inc. All rights reserved. Contents may not be reproduced by any means, in whole or in part, without the prior written permission of the publisher. The opinions expressed in *JBED* are not necessarily those of Matrix Group Publishing Inc. or the National Institute of Building Sciences/Building Enclosure Technology and Environment Council.

## Feature:

- 11** Heat Transfer Numerical Modeling Perspectives: Steel-Framed Wall Analysis
- 15** Thermal Bridging: Ignorance is not Bliss



- 18** The Truth is Out There: Efficiency and Iconic Architecture Can Co-Exist
- 23** Thermal Bridging: The Final Frontier of High-Performance Buildings



## Messages:

- 7** Message from Institute President Henry L. Green
- 9** Message from BETEC Chairman Wagdy Anis

## Industry Updates:

- 27** BEC Corner
- 32** Buyer's Guide



**On the cover:** The Centre for Interactive Research on Sustainability (CIRS), located at the University of British Columbia, is one of the greenest buildings on earth... and provides a great example of thermal bridging done right.

# The Truth is Out There: Efficiency and Iconic Architecture Can Co-Exist

By Joseph Lstiburek, PhD, P.Eng., ASHRAE Fellow

IT IS A BEAUTIFUL BUILDING. QUITE stunning actually. It is an embodiment of everything that is right and wrong with architecture. An orgy of glass and concrete. It is a thermodynamic obscenity while it takes your breath away. An 82 story heat-exchanger in the heart of Chicago (**FIGURE 1, FIGURE 2 AND FIGURE 3**).

Could it have been constructed differently without the thermal bridges and without changing the appearance? Sure. It could have been an example of efficiency, not just iconic architecture. And that would have been a beautiful thing. And it could have been done with off the shelf stuff, no less. How about a true R-5 curtain wall between thermally broken cantilevered slabs? Check out **FIGURE**

**4** and **FIGURE 5**. These are available right here in the good 'ole US of A. They're also apparently available in Serbia (**FIGURE 6**) and pretty much anywhere folks want them. Triple-glazed gas-filled curtain walls have been around for a while. The thermal breaks have also been around for a while; mostly in Europe and in Canada.

The Aqua Building is not an exception. Most buildings are like this; thermal bridges galore. It is a big deal. The good news is folks are beginning to get it (ASHRAE 90.1) and great work is being done on the research side.<sup>1</sup> The bad news is that although we know this stuff, it is not getting used. It seems to me that folks are just not serious about energy. This is an architectural problem. This is an

architectural detailing problem. This is an architectural detailing problem that involves structural engineering. To deal with this is going to require collaboration between architects and structural engineers. Serious collaboration.

Too often, structural decisions are made in isolation from the energy impacts. It is not that the structural engineer does not care. It's just that no one asks—but it's time to ask. It's time to get great things from your structural engineer.

Balconies are a big deal and everyone knows that. But relieving angles can be an even bigger deal. They go completely around a building and sometimes occur at every floor. Balconies rarely do, previous exception noted. The good news is that we know how to deal with relieving angles. The bad news is that we often do not. Sound familiar?

The best way to deal with relieving angles is to hang them off of the building with a "stand-off" (**FIGURE 7**) and then spread them out every second or third floor. This



Figure 1. Extended finned-surface, made of concrete.

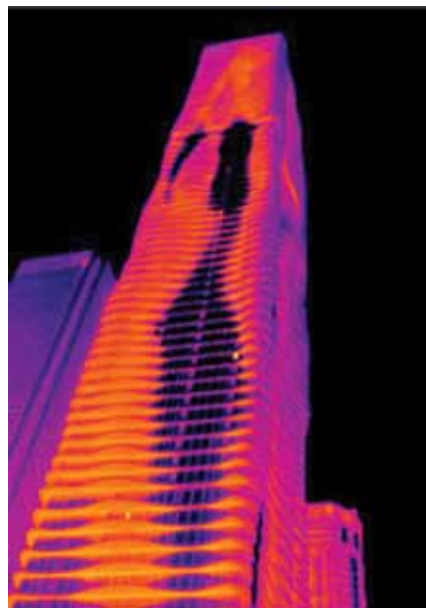


Figure 2. An infra-red of the Aqua Tower.

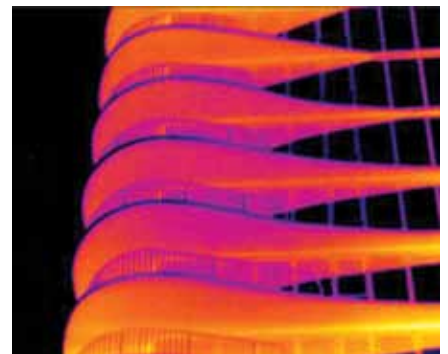


Figure 3. An infra-red of an Aqua Tower balcony.

Dave Robley and Michael Stuart, Fluke Corp.

allows your insulation to run past the angle. Presto, continuous insulation (FIGURE 8). The stand-offs can be welded to plates cast into slabs or welded to structural steel supports (FIGURE 9). Amazing as it seems to civilians and other mere mortals, the architect obsesses over the location of the relieving angle. It can't be just anywhere. It has to look good wherever it is. Sometimes it has to line up over the heads of windows for reasons that escape me, a mere mortal, so we have to ask the structural engineer to be clever (FIGURE 10). See, all you have to do is ask.

What if I do not like brick? Great, no relieving angles. How do I do panels? And, how do I do panels "conservatively" if I don't buy into all that other stuff you have talked about? Ok, ok, ok. Check out FIGURE 11. Although the structural design required for thin stainless angles and long galvanized L-rails is simple,

engineers normally are designing for loads of thousands of pounds (kips) and the hundred pound loads involved here are unfamiliar and sometimes scary.

We also have to deal with the thermal bridges associated with windows. For reasons that are unclear to me, where windows are concerned, we don't call it a thermal bridge, we call it "flanking" losses. Flanking losses are losses around the window often through the buck or through the structure components the wall is installed in. The bottom line is that you need to line up the thermal control layer in the window unit (a.k.a. "thermal break") with the continuous insulation you are now required to install on the exterior of the wall. That often means pushing your window outboard and hanging it in mid-air, sort of. Gotta talk to the structural engineer again. Magic will happen again.

FIGURE 12 has everything, including relieving angles on stand-offs and bumped out windows. Nice. I wonder if there are any Leadership in Energy and Environmental Design® (LEED) points for this? Yeah, probably not.

The best thing to do is to take your structural engineer out to lunch and discuss relieving angles, window attachment and balcony thermal breaks.

Enjoy a nice moment with your engineer...

*Joseph Lstiburek, PhD, P.Eng., ASHRAE Fellow, is principal of Building Science Corporation.*

*Unless otherwise noted, all photos/images provided by @buildingscience.com. The rest of the images are located on the next page.*

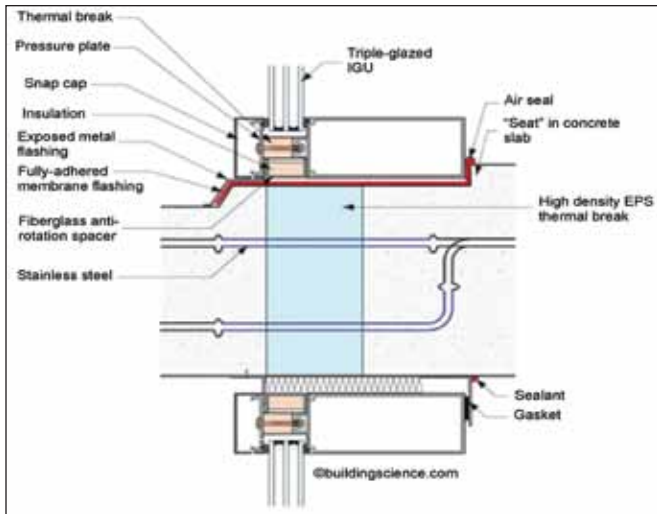


Figure 4. Section at balcony glazing interface. Take a high-performance curtainwall and couple it with a high-density expanded polystyrene thermal break and some basic slab water control and you have a beautiful thing.



Figure 6. The product shown here, which is being used on a building in Serbia, prevents thermal bridges on balconies.



Figure 5. Pre-manufactured thermal break. High-density graphite-enhanced expanded polystyrene. Note the reinforcing rods penetrating the foam are stainless steel, not carbon steel. Stainless steel has less than half the thermal conductivity of carbon steel.

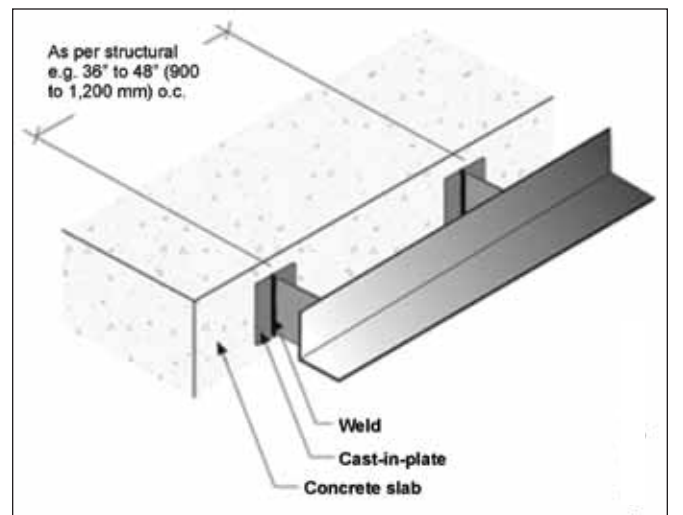


Figure 7. Relieving angles. Hang them off of the building with a "stand-off." This allows your insulation to run past the angle.

Schoeck Canada, Inc.

Beodrom, Inc., Belgrade, Serbia

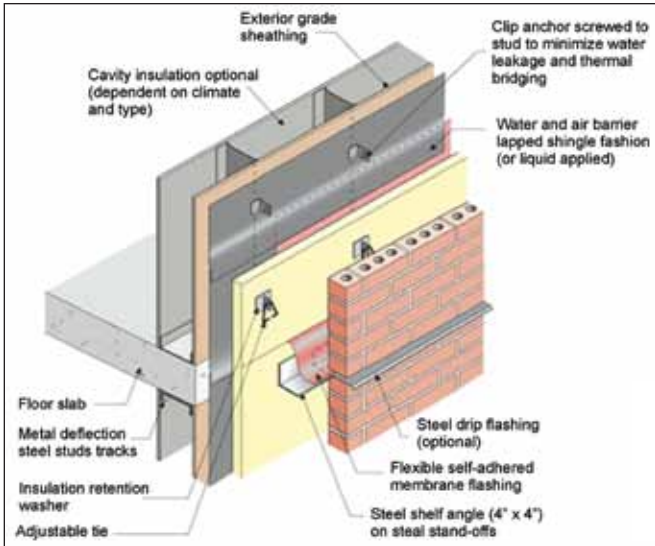


Figure 8. Continuous insulation. If you are serious about energy, this becomes standard practice.

MORE IMAGES RELATING TO THIS ARTICLE ARE AVAILABLE AT [WWW.BUILDINGSCIENCE.COM/DOCUMENTS/INSIGHTS/BSI062-THERMAL-BRIDGES-REDUX](http://WWW.BUILDINGSCIENCE.COM/DOCUMENTS/INSIGHTS/BSI062-THERMAL-BRIDGES-REDUX)

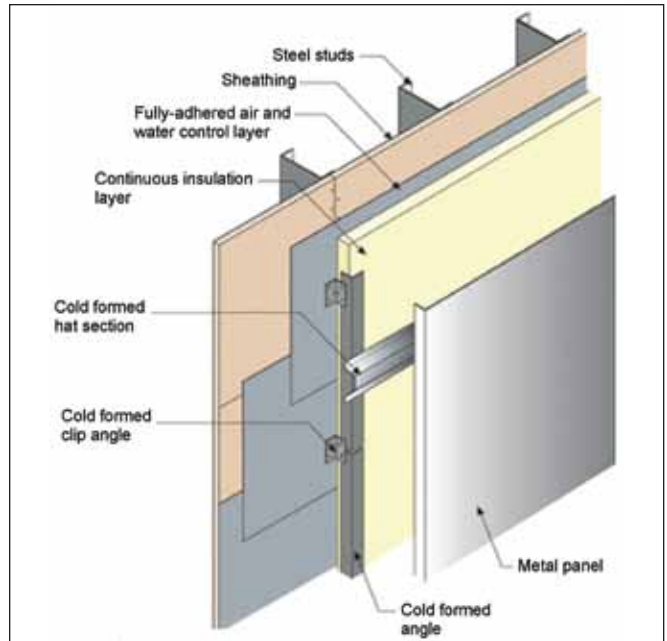


Figure 11. Clip and rail minimum thermal bridging to support metal panels, fiber cement panels and composite panels.



Figure 9. Stand-off. This can be welded to plates cast into slabs or welded to structural.



Figure 10. Relieving angle line up. Notice how the relieving angle lines up with the top of the window.



Figure 12. A little bit of everything...relieving angles on stand-offs and bumped-out windows.

#### FOOTNOTE

1. ASHRAE Report No. 5085243.01, *Thermal Performance of Building Envelope Details for Mid- and High-Rise Buildings (1365-RP)*, addresses thermal bridges. The report was done July 2011, for Technical Committee 4.4, Building Materials and Building Envelope Performance. [www.morrisonhershfield.com/.../MH\\_1365RP\\_Final\\_%20small.pdf](http://www.morrisonhershfield.com/.../MH_1365RP_Final_%20small.pdf).

## Complete Resources for the Construction Industry

When people in the building industry have questions about design, management, operations and maintenance they go to the National Institute of Building Sciences **WBDG Whole Building Design Guide®** at [www.wbdg.org](http://www.wbdg.org).

**WBDG** is one of the largest, most comprehensive online resources in the building construction industry. This web-based portal contains design, construction and facility management information and criteria required by U.S. military and other federal agencies.

### WBDG Whole Building Design Guide:

- Uses the integrated, whole-building approach to programming, design, construction, operations and maintenance
- Covers a wide range of topics, from performance and sustainability to security
- Links information across industries and disciplines
- Is organized into three main categories: Design Guidance, Project Management, and Operations and Maintenance
- Offers Continuing Education (CE) program for design and maintenance facility professionals



National Institute of  
**BUILDING SCIENCES**

(202) 289-7800 [wbdg@nibs.org](mailto:wbdg@nibs.org)

**WBDG®**  
WHOLE BUILDING DESIGN GUIDE  
[www.wbdg.org](http://www.wbdg.org)

*An Authoritative Source of Innovative Solutions for the Built Environment*

[www.nibs.org](http://www.nibs.org)



**BUILDINGS XII**  
**CONFERENCE**  
**DECEMBER 1-5, 2013**

# SAVE THE DATE!

**THE TWELFTH INTERNATIONAL CONFERENCE ON THERMAL PERFORMANCE OF THE EXTERIOR ENVELOPES OF WHOLE BUILDINGS, SPONSORED BY BETEC, ASHRAE AND ORGANIZED BY THE OAK RIDGE NATIONAL LABORATORY (ORNL), WILL BE HELD ON DECEMBER 1-5, 2013 AT THE SHERATON SAND KEY RESORT IN CLEARWATER BEACH, FLORIDA. THIS CONFERENCE WILL BE PRESENTED IN TWO CONCURRENT TRACKS:**

**Principles** - Devoted to Research; and **Practices** - Focusing on Practical Applications and Case Studies. Specific topic workshops will be presented before and/or after the conference.

Inaugurated in 1979, the "Buildings Conference" takes place every three years allowing time to develop new research and technology applications and to document the findings. Attendance is international and draws heavily on the advanced technical knowledge of all our global experts.

The "Buildings Conference" presents a great opportunity for product manufacturers, research groups, technical advisors, builders, designers and other consultants to discuss their work achievements, interest and awareness of buildings issues, and provide solutions to some of our major building problems.

This is also a great opportunity to create a presence at the conference by becoming a sponsor. For additional information on sponsorship, please contact Andre Desjarlais at [desjarlaisa@ornl.gov](mailto:desjarlaisa@ornl.gov) or phone (865-574-0022).